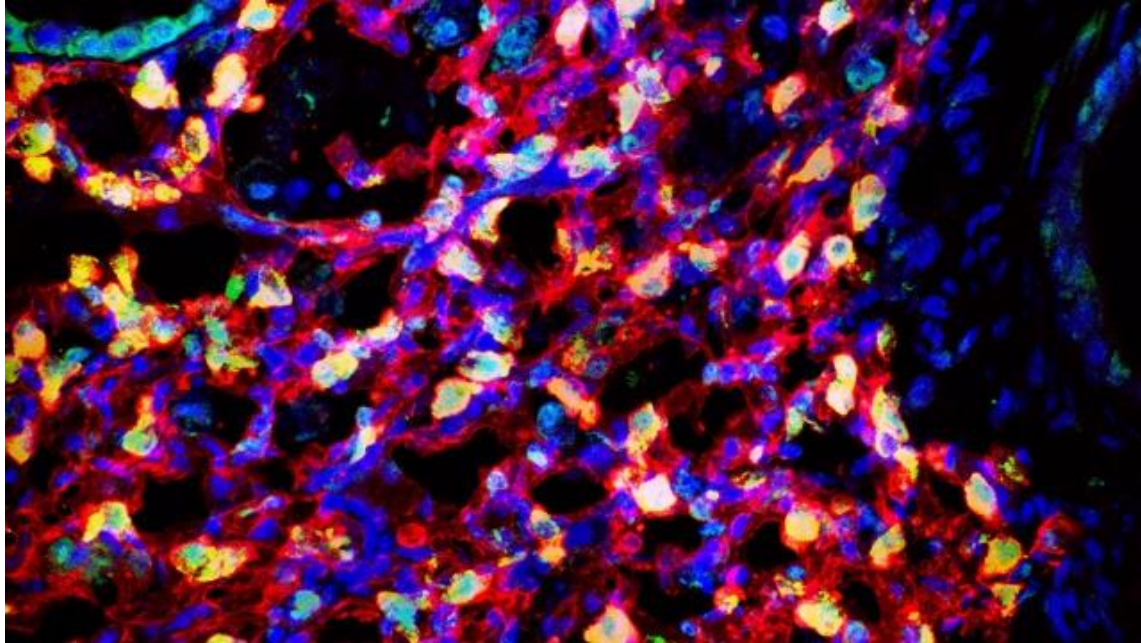


Multipotent Lung Stem Cells Identified

Nov 14, 2017



An image of an injured mouse lung partially regenerated by injected lung stem cells. The newly regenerated lung tissue is red, and the type-2 alveolar cells are green.

Stanford scientists have found a cell that creates the two different compartments in the mouse lung. They hope their discovery could lead to better therapies for people with lung disease.

A researcher at the School of Medicine and his colleagues have succeeded in isolating mouse lung stem cells, growing them in large volumes and incorporating them into injured lung tissue in mice. The work raises hopes for regenerative therapies that could heal currently intractable lung diseases.

The research work was published online Nov. 6 in *Nature Methods*. Kyle Loh, PhD, an investigator at the Stanford Institute for Stem Cell Biology and Regenerative Medicine, and Bing Lim, MD, PhD, an investigator at the Genome Institute of Singapore, share senior authorship. The lead author is Massimo Nichane, PhD, currently a research scientist at the Stanford stem cell institute.

The lungs are among the most vital organs of the body. In conjunction with the cardiovascular system, they allow air to travel to every cell and get rid of the waste products of respiration, such as carbon dioxide. For many people with end-stage lung diseases, the only option is lung transplantation.

“Scientists have previously had little success in putting new lung cells into damaged lung to regenerate healthy tissue,” Loh said. “We decided to see if we could do that in an animal model.”

The researchers started by working to improve on current knowledge of lung stem cells. The lung is divided into two compartments, Loh said: the airway, which allows for passage of air in and out of the lung; and the alveoli, where gases pass in and out of the blood. Other researchers had previously isolated one stem cell for the airway and another stem cell for the alveoli. Loh and his colleagues searched for and found a single lung stem cell that could create cells in both the airway and the alveoli. These multipotent lung stem cells were typified by their display of a protein marker called Sox9.

From one to 100 billion billion -

Once they had isolated the stem cells, they were able to make them multiply dramatically. Each mouse lung stem cell that they started with was able to grow into 100 billion billion lung stem cells over the course of six months. Previously, researchers had not had much success expanding any lung stem cell populations in the laboratory.

Finally, they injected the stem cells into mouse lungs that had been injured by a variety of toxins. During observations multipotent stem cells repaired the injured tissue and were able to differentiate into the many different kinds of cells that make up the healthy lung.